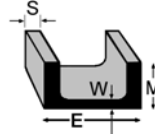
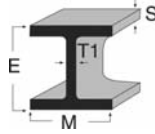




Boat Lift Extrusions and Accessories



Structural Aluminum I-Beam (Aluminum Association)

6061-T6 x 25' Stock Code	Size in Inches (E x M x S / T1)	Approx. Wt/Lin ft.
MILL ORDER	3.00 x 2.50 x .20 / .13 (16-61-2001 NC)	1.637
16-61-205	3.00 x 2.50 x .26 / .15	2.030
16-61-210	4.00 x 3.00 x .23 / .15	2.331
52-61-3219	4.00 x 3.00 x .29 / .17	2.793
16-61-220	5.00 x 3.50 x .32 / .19 (25')	3.700
16-61-225	6.00 x 4.00 x .29 / .19	4.030
52-61-2036	6.00 x 4.00 x .35 / .21 (11')	4.700
16-61-230	6.00 x 4.00 x .35 / .21	4.700
25-61-599	Pulley Ear Bracket x 12' (for 6 x 4 I-Beams)	
16-61-235	7.00 x 4.50 x .38 / .23	5.800
52-61-1700	8.00 x 5.00 x .35 / .23 (12' 6")	6.307
16-61-240	8.00 x 5.00 x .35 / .23	6.307
52-61-2026	8.00 x 5.00 x .41 / .25 (12' 6")	7.023
52-61-775	8.00 x 5.00 x .41 / .25	7.023
52-61-4255	8.00 x 5.00 x .41 / .25 (26')	7.023
52-61-791	8.00 x 5.00 x .41 / .25 (30')	7.023
52-61-4409	8.00 x 5.00 x .41 / .25 (32')	7.023
52-61-2312	8.00 x 5.00 x .41 / .25 (40')	7.023
25-61-600	Pulley Ear Bracket x 12' (for 8 x 5 I-Beams)	
16-61-262	9.00 x 5.50 x .44 / .27	8.360
52-61-3121	10.00 x 6.00 x .41 / .25 (14')	8.646
52-61-1408	10.00 x 6.00 x .41 / .25 (16')	8.646
16-61-263	10.00 x 6.00 x .41 / .25 (25')	8.646
16-61-264	10.00 x 6.00 x .41 / .25 (28')	8.646
16-61-265	10.00 x 6.00 x .41 / .25 (32')	8.646
52-61-911	10.00 x 6.00 x .50 / .29 (25')	10.286
52-61-1410	10.00 x 6.00 x .50 / .29 (32')	10.286
52-61-1389	10.00 x 6.00 x .50 / .29 (40')	10.286
25-61-601	Pulley Ear Bracket x 12' (for 10 x 6 I-Beams)	
52-61-2382	12.00 x 7.00 x .47 / .29	11.672
52-61-1171	12.00 x 7.00 x .62 / .31 (20')	14.292
52-61-1855	12.00 x 7.00 x .62 / .31	14.292
52-61-2301	12.00 x 7.00 x .62 / .31 (32')	14.292
52-61-2872	12.00 x 7.00 x .62 / .31 (40')	14.292
16-61-266	12.00 x 7.00 x .62 / .31 (50')	14.292

Structural Aluminum Channel (Aluminum Association)

6061-T6 x 25' Stock Code	Size in Inches (E x M x S / F)	Approx. Wt/Lin ft.
13-61-500	2 x 1 x .130 / .130	0.577
13-61-503	2 x 1.25 x .260 / .170 (20')	1.071
13-61-510	3 x 1.50 x .200 / .130	1.135
13-61-515	3 x 1.75 x .260 / .170	1.597
13-61-520	4 x 2 x .230 / .150	1.738
13-61-525	4 x 2.25 x .290 / .190	2.331
52-61-3728	5 x 2.25 x .260 / .150 (x 12' 9")	2.212
52-61-440	5 x 2.25 x .150 / .260 (20')	2.212
13-61-530	5 x 2.25 x .260 / .150	2.212
13-61-535	5 x 2.75 x .320 / .190	3.089
13-61-540	6 x 2.50 x .290 / .170	2.834
52-61-3427	6 x 2.50 x .290 / .170 (x 12' 6")	2.834
13-61-541	6 x 2.50 x .290 / .170 (14' 6")	2.834
52-61-3729	6 x 3.25 x .350 / .210 (x 12' 9")	4.030
13-61-545	6 x 3.25 x .350 / .210	4.030
13-61-575	7 x 2.75 x .290 / .170	3.205
52-61-1450	7 x 2.75 x .290 / .170 (15' 6")	3.205
52-61-0017	7 x 2.75 x .290 / .170 (x 17')	3.205
52-61-593	7 x 3.50 x .380 / .210	4.715
13-61-560	8 x 3 x .350 / .190	4.147
52-61-4329	8 x 3 x .350 / .190 (40')	4.147
52-61-1707	8 x 3.75 x .410 / .250 (x 14' 9")	5.787
13-61-561	8 x 3.75 x .410 / .250 (15')	5.787
52-61-1503	8 x 3.75 x .410 / .250 (x 16' 9")	5.787
13-61-563	8 x 3.75 x .410 / .250	5.787
13-61-562	8 x 3.75 x .410 / .250 (32')	5.787
13-61-564	8 x 3-3/4 x .410 / .250 (40')	5.787
MILL ORDER	9 x 3.25 x .350 / .230 (13-61-585 - NC)	4.983
MILL ORDER	9 x 4 x .440 / .240 (13-61-590 - NC)	6.970
13-61-571	10 x 3.5 x .410 / .250 (40')	6.136
13-61-572	10 x 3.5 x .410 / .250 (45')	6.136
MILL ORDER	10 x 4-1/4 x .500 / .310 (52-61-2272)	8.360
MILL ORDER	12 x 4 x .470 / .290 (13-61-580 - TX)	8.274
MILL ORDER	12 x 5 x .620 / .350 (51-61-107)	11.822

Items marked as MILL ORDER are non stock but available.
Product codes listed on MILL ORDER items are for die reference only.
Customer must specify length, alloy & temper.

Standards 28



EMS FL

1-800-432-2204
(561) 588-4780 - fax

EMS NC

1-800-343-8154
(704) 391-2267 - fax

EMS TX

1-800-996-6061
(281) 656-2297 - fax

EMS MO

1-888-822-6061
(314) 344-3349 - fax

Eastern Metal Supply

Quality Shapes In Aluminum

Additional Locations: West Palm Beach & Lakeland, FL; Newark, DE and Birmingham, AL

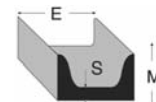
website: www.EasternMetal.com

e-mail: info@EasternMetal.com

version: 12/30/16

Boat Lift Extrusions and Accessories

Structural Aluminum Channel - 6061-T6 x 25' (American Standard)

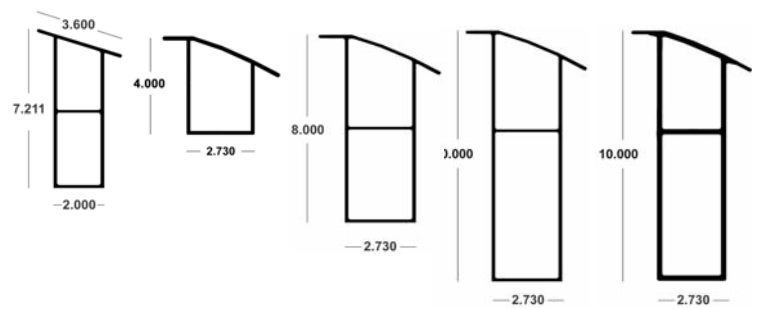


Stock Code	(E x M x S / F) Size in Inches	Approx. Wt/Lin ft.	Stock Code	(E x M x S / F) Size in Inches	Approx. Wt/Lin ft.
13-61-200	3 x 1.41 x .170	1.417	13-61-275	8 x 2.29 x .250	4.252
13-61-205	3 x 1.498 x .258	1.729	MILL ORDER 13-61-280 (NC)	8 x 2.343 x .303	4.951
13-61-210	3 x 1.596 x .356	2.074	MILL ORDER 13-61-285 (NC)	8 x 2.435 x .395	5.617
13-61-215	4 x 1.58 x .180	1.846	13-61-290	8 x 2.527 x .487	6.484
13-61-220 (TX)	4 x 1.647 x .247	2.161	MILL ORDER	9 x 2.43 x .230	4.604
13-61-216	4 x 1.72 x .320	2.504	MILL ORDER 13-61-668 (NC)	9 x 2.648 x .448	6.911
13-61-230	5 x 1.75 x .190	2.316	13-61-310	10 x 2.6 x .240	5.278
13-61-235	5 x 1.885 x .325	3.108	MILL ORDER 52-61-561	10 x 2.739 x .379	6.915
MILL ORDER 52-61-802	5 x 2.032 x .472	3.975	13-61-320	10 x 2.886 x .526	8.641
13-61-245	6 x 1.920 x .200	2.826	13-61-325	12 x 2.960 x .300	7.415
MILL ORDER 13-61-250 (NC)	6 x 1.945 x .225	3.002	52-61-455	12 x 3.047 x .387	8.644
52-61-1080	6 x 2.034 x .314	3.631	MILL ORDER 52-61-420	12 x 3.17 x .510	10.374
MILL ORDER 52-61-419	6 x 2.157 x .437	4.498	MILL ORDER 52-61-025	15 x 3.40 x .400	11.708
MILL ORDER 13-61-265 (NC)	7 x 2.110 x .230	3.541			
MILL ORDER 52-61-4138	7 x 2.194 x .314	4.232			

Bunks

52-63-6513	19° Extruded Bunk x 12'	2.347
40-63-230	19° Extruded Bunk x 20'	2.347
40-63-235	19° Extruded Bunk x 24'	2.347
40-63-271	4" Universal x 24'	1.626
40-63-280	8" Universal x 10' (Flat, 19°, 24°, 28°)	2.898
40-63-273	8" Universal x 12' (Flat, 19°, 24°, 28°)	2.898
40-63-274	8" Universal x 14' (Flat, 19°, 24°, 28°)	2.898
40-63-276	8" Universal x 16' (Flat, 19°, 24°, 28°)	2.898
40-63-275	8" Universal x 24' (Flat, 19°, 24°, 28°)	2.898
40-63-282	10" Universal Bunk x 10'	3.759
40-63-281	10" Universal Bunk x 12'	3.759
40-63-279	10" Universal Bunk x 14'	3.759
40-63-277	10" Universal Bunk x 16'	3.759
40-05-277	10" HD Universal Bunk x 16'	6.326 - (6005A T61) NEW!
40-05-278	10" HD Universal Bunk x 24'	6.326 - (6005A T61) NEW!
40-63-278	10" Universal Bunk x 24'	3.759
1-00-005	3.6 x 1.5 Flat Trailer Bunk x 24'	1.172
21-00-712R	End Cap Casting (Right) for 8" Universal Boat Bunk	
21-00-712L	End Cap Casting (Left) for 8" Universal Boat Bunk	
13-63-270	2-1/4 x 7/8 x 1/8 x 20' Channel	0.563 (used as end caps for 19° Extruded Bunk)
13-63-285	3 x 1 x 1/8 x 20' Channel	0.713 (used as end caps for 8" & 10" Universal Bunk)

(below: left to right) 19° Extruded Bunk • 4" Universal Boat Bunk
8" Universal Boat Bunk • 10" Universal Boat Bunk • 10" HD Universal Boat Bunk



NEW!



Flat Trailer Bunk

Pre-fabbed Bunks - Bunk supplied with vinyl pad (40-63-2401) and end caps on both ends, attached with aluminum rivets.

4" Universal Pre-Fabbed Bunk		10" Universal Pre-Fabbed Bunk	
40-63-271F	6'	40-63-282F	10'
40-63-271F8	8'	40-63-281F	12'
40-63-271F12	12'	40-63-279F	14'
8" Universal Pre-Fabbed Bunk		40-63-277F	16'
40-63-270F	8'	40-05-277F	16' HD (6005A T61) NEW!
40-63-280F	10'	40-63-283F	18'
40-63-273F	12'		
40-63-274F	14'		
40-63-276F	16'		
		19° Extruded Pre-Fabbed Bunk (without end caps)	
		52-63-6513F	12' Pre-Fabbed Bunk NEW!



Pre-Fabbed Bunk (Universal)



Pre-Fabbed Bunk (19° Extruded) No End Caps

Standards 29



EMS FL

1-800-432-2204
(561) 588-4780 - fax

EMS NC

1-800-343-8154
(704) 391-2267 - fax

EMS TX

1-800-996-6061
(281) 656-2297 - fax

EMS MO

1-888-822-6061
(314) 344-3349 - fax

Eastern Metal Supply

Quality Shapes In Aluminum

Additional Locations: West Palm Beach & Lakeland, FL; Newark, DE; Birmingham, AL, Akron, OH and Van Buren, AR

website: www.EasternMetal.com • e-mail: info@EasternMetal.com version: 04/17/18

Boat Lift Extrusions and Accessories

Bunk Pad

Stock Code

40-63-2400

40-63-2401

Description

Black Vinyl x 100' coils

Universal Bunk Pad Black Vinyl x 100' (Flat, 19°, 24°, 28°)



Bunk Bracket, Bunk and Bunk Pad

Universal Bunk End Caps

UNVBUNK

Left and Right Universal Bunk End Caps; Black Nylon

Bunk Bracket

40-63-430

4" Universal Bunk Bracket x 5"

40-63-225

2 x 5-3/4 x .300 x 5"

40-63-220

2 x 8 x .300 x 5"

40-63-218

2 x 10 x .300 x 5"

52-61-002

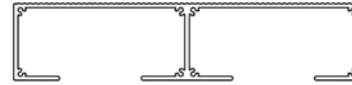
Adjustable Bunk Bracket x 12"

52-61-0025

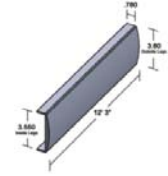
Adjustable Bunk Bracket x 5"
(with 4 holes)



4" Universal Bunk Bracket



16" Walkboard



16" Walkboard End Cap



16" Walkboard Stiffener

Walkboards

3-1/2 x 16" Walk Board - NEW!

Custom Lengths Available;

Sandblasted Finish Available as Special Order

30-61-312

x 12'

30-61-314

x 14'

30-61-316

x 16'

30-61-318

x 18'

30-61-320

x 20'

30-61-324

x 24'

30-61-330

x 30'

30-EC-000

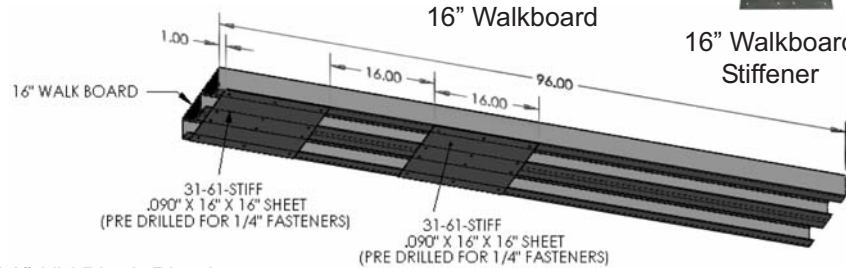
16" Walk Board End Cap x 12' 3" UV Black Plastic

31-61-STIFF

16" Walk Board Stiffener (.090 x 16" x 16") Predrilled with 1/4" holes

7' - 8' Free Span Application Requires 2 Stiffeners 16" apart • **8' to 10' Free Span Application** Requires 3 Stiffeners 16" apart

Start the first Stiffener 1" from the end of span to allow for End Cap.



30-63-112

12" Dock Flooring x 24' 1" (6005-T5 MF Knurled)

52-63-4283

11-1/2" Bleacher Plank x 16' (B-2) 2.130

52-63-6118

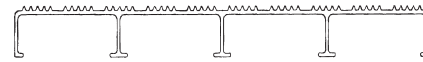
11-1/2" Bleacher Plank x 20' (B-2) 2.130

52-63-13304

11-1/2" Bleacher Plank x 24' (B-2) 2.130

52-63-6786

Bleacher Plank End Cap x 12' 0.332



Walkboard - 12" Dock Flooring



11-1/2" Bleacher Plank

Bleacher Plank End Cap

Miscellaneous Accessories

Stock Code

25-61-599

6" Pulley Bracket x 12' (use with all 6" I-Beams)

25-61-600

8" Pulley Bracket x 12' (use with all 8" I-Beams)

25-61-601

10" Pulley Bracket x 12' (use with all 10" I-Beams)

PULLEY-BRACK-6

6" Machined Pulley Bracket (use with all 6" I-Beams)

PULLEY-BRACK-8

8" Machined Pulley Bracket (for use with 8" I-Beam)

PULLEY-BRACK-10

10" Machined Pulley Bracket (use with all 10" I-Beams)

PULLEY-COMBO-6

6" Machined Pulley Bracket with Pulley & Bolt

PULLEY-COMBO-8

8" Machined Pulley Bracket with Pulley & Bolt

PULLEY-COMBO-10

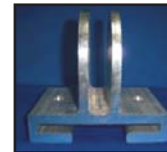
10" Machined Pulley Bracket with Pulley & Bolt

PULLEY-4DIA

4" Pulley w/bronze oil lite bushing

PULLEY-BOLT

3/4" x 3-1/2" Stainless Axle Bolt w/ Zerk grease fitting



Pulley Brackets



Pulley Combos

Cable Winders - Please check with your EMS Sales Rep for other available sizes

CWL

2 x 15-3/4 Cable Winder - Left Hand

CWR

2 x 15-3/4 Cable Winder - Right Hand

CWL-18 - NEW!

2 x 18 Cable Winder - Right Hand, 1 hole at each end

CWL-18 - NEW!

2 x 18 Cable Winder - Left Hand, 1 hole at each end



4" Pulley



Axle Bolt

Aluminum Tubes for Cable Winders

52-61-3149

3" OD x 2.415" ID x 20' (6061-T6) 2.986

25-61-300

3" OD x 1.920" ID x 20' (6061-T6) 5.000



Cable Winder

Standards 30



EMS FL

1-800-432-2204

(561) 588-4780 - fax

EMS NC

1-800-343-8154

(704) 391-2267 - fax

EMS TX

1-800-996-6061

(281) 656-2297 - fax

EMS MO

1-888-822-6061

(314) 344-3349 - fax

Eastern Metal Supply

Quality Shapes In Aluminum

Additional Locations: West Palm Beach & Lakeland, FL; Newark, DE and Birmingham, AL

website: www.EasternMetal.com

e-mail: info@EasternMetal.com

version: 08/05/16