

# Eastern Metal Supply

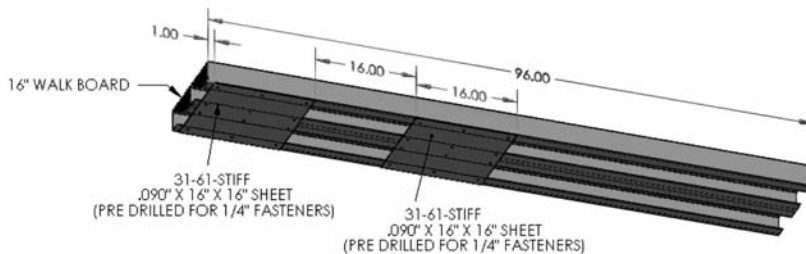
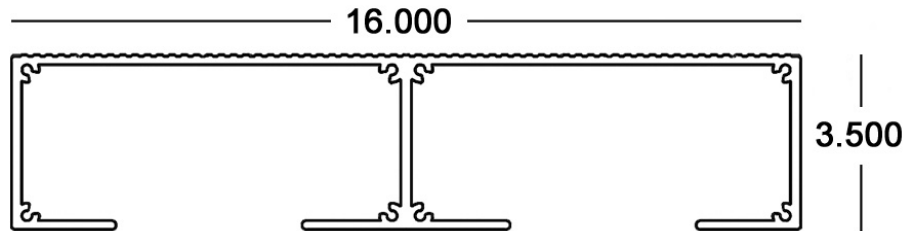
**NEW!**

## Introducing a 16" Walkboard to the Manufacturers and Installers of Boat Lifts and Docks!

**3-1/2" x 16" Walk Board** 6005A-T61

Custom Lengths and Sandblasted Finish Available as a Special Order

- 30-61-312** x 12'
- 30-61-314** x 14'
- 30-61-316** x 16'
- 30-61-318** x 18'
- 30-61-320** x 20'
- 30-61-324** x 24'
- 30-61-330** x 30'



• **7' - 8' Free Span Application**

Requires 2 Stiffeners 16" apart

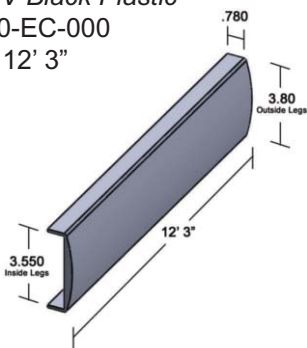
• **8' to 10' Free Span Application**

Requires 3 Stiffeners 16" apart

Start the first Stiffener 1" from the end of span to allow for End Cap.

### 16" Walk Board End Cap

UV Black Plastic  
30-EC-000  
x 12' 3"



### 16" Walk Board Stiffener

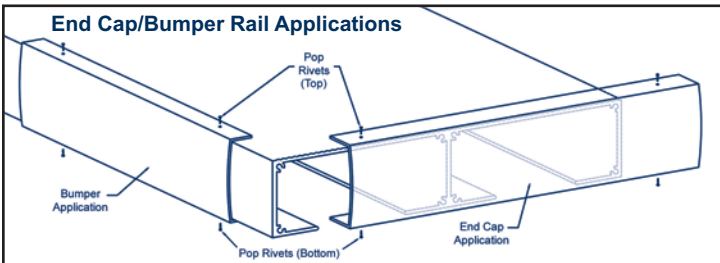
31-61-STIFF  
.090 x 16" x 16"  
Predrilled with 1/4" holes



## FEATURES & BENEFITS:

- A safer, non-skid serrated walking surface, **the widest commercially available**
- Engineered panel will support up to a 300 pound concentrated load at the tip of a 10' max overhang
- The engineered panel offers 10' clear spans and eliminates welding & fabrication resulting in lower overall costs
- Structural alloy provides minimal deflection
- End caps provide a clean, finished look & can also be used as bumpers on the walkboard's sides
- Sandblasted finish offered as a custom option providing additional slip resistance

### End Cap/Bumper Rail Applications



**Eastern Metal Supply**  
Quality Shapes In Aluminum

#### EMS FL

1-800-432-2204  
(561) 588-4780 - fax

#### EMS NC

1-800-343-8154  
(704) 391-2267 - fax

#### EMS TX

1-800-996-6061  
(281) 656-2297 - fax

#### EMS MO

1-888-822-6061  
(314) 344-3349 - fax

Additional Locations: West Palm Beach & Lakeland, FL; Newark, DE and Birmingham, AL

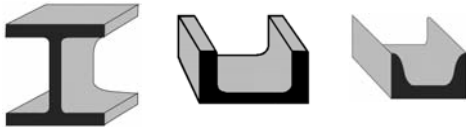
website: [www.EasternMetal.com](http://www.EasternMetal.com) e-mail: [info@EasternMetal.com](mailto:info@EasternMetal.com) WalkBoard 08/07/14

# Eastern Metal Supply

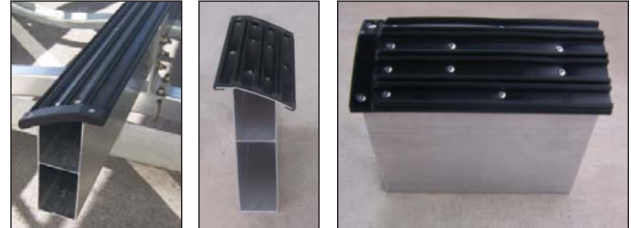
## Additional Items for the Boat Lift & Dock Accessory Industries

### Standard Aluminum Extrusions

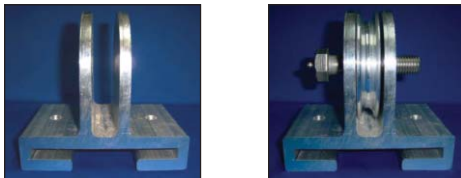
- Aluminum Association Structural I-Beams & Channels up to 12" & lengths up to 50'
- American Standard Channels up to 15" & lengths up to 50'



### Aluminum Bunks & Pads



### Pulley Brackets & Combos



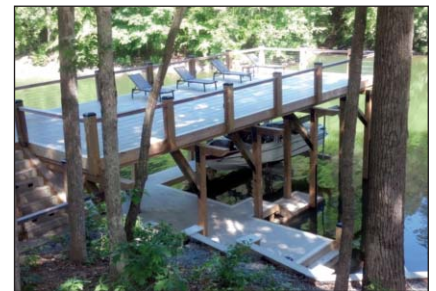
### Cable Winders



### Bleacher Planks



### ENDECK Deck Board & Fascia (see available colors below)

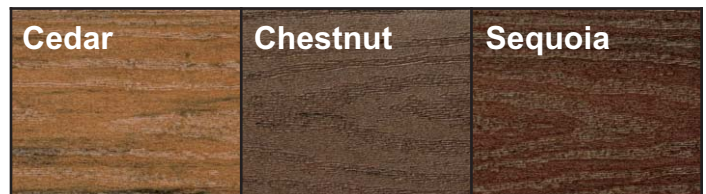


## Capped Cellular 100% PVC Deck Boards

### WOODLAND Series:



### FOREST Series:



**Eastern Metal Supply**  
Quality Shapes In Aluminum

#### EMS FL

1-800-432-2204  
(561) 588-4780 - fax

#### EMS NC

1-800-343-8154  
(704) 391-2267 - fax

#### EMS TX

1-800-996-6061  
(281) 656-2297 - fax

#### EMS MO

1-888-822-6061  
(314) 344-3349 - fax

Additional Locations: West Palm Beach & Lakeland, FL; Newark, DE and Birmingham, AL

website: [www.EasternMetal.com](http://www.EasternMetal.com) e-mail: [info@EasternMetal.com](mailto:info@EasternMetal.com) WalkBoard 06/10/14