

# Round Marine Pads - (Packaged in pairs)

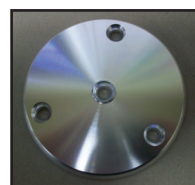
## POLISHED PADS

**D = Polished**  
**B = Brushed**

### 3-Hole Round Pads - Bright Dipped POLISHED - Standard Edge

Stock Code	Size in Inches	Fastener
D-253	2.5	#10
52-63-6781	2.5	#10 (5/16 threaded center hole)
D-303	3	#10
D-303A	3	1/4
D-303-NCS	3	1/4 (NO countersink on holes)
D-353	3.5	1/4
D-353-NCS	3.5	1/4 (NO countersink on holes)
D-403	4	1/4
D-403-NCS	4	1/4 (NO countersink on holes) - <b>NEW!</b>
D-403-250	4	1/4 (1-1/4 center hole)
D-403-375	4	1/4 (3/8 center hole - NOT threaded)
D-453	4.5	1/4
D-453-NCS	4.5	1/4 (NO countersink on holes)
D-503	5	1/4

D or B Standard Edge Style



4" 3-Hole Round Pad  
Bright Dipped Polished (D)

### 3 Hole Round Pads - Bright Dipped POLISHED - "EP" STYLE

Stock Code	Size in Inches	Fastener
EP-303	3	1/4
EP-353	3.5	1/4
EP-403	4	1/4
EP-453	4.5	1/4

EP Edge Style



### 4-Hole Round Pads - Bright Dipped POLISHED - Standard Edge

Stock Code	Size in Inches	Fastener
D-304	3	#10
D-354	3.5	1/4
D-404	4	1/4
D-404-NCS	4	1/4 (NO countersink on holes)
D-404-250	4	1/4 (1-1/4 center hole)
D-404OS	4	1/4 (offset)
D-454	4.5	1/4
D-504	5	1/4
SPECIAL ORDER	5 (D-504-250)	1/4 (1-1/4 center hole)

4-Hole Round Pad - Bright Dipped Polished (D) 1-1/4" center hole

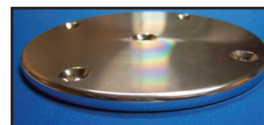


4 Hole Round Pads - Offset Bright Dipped Polished (D)



### 4 Hole Round Pads - Bright Dipped POLISHED - "EP" STYLE

Stock Code	Size in Inches	Fastener
EP-354	3.5	1/4
EP-404	4	1/4
EP-404-150	4	1/4 (1-1/2" center hole)
EP-454	4.5	1/4
EP-454-150	4.5	1/4 (1-1/2" center hole)
EP-504	5	1/4



4 Hole Round Pads (EP Style) Bright Dipped Polished

### 5 Hole Round Pads - Bright Dipped POLISHED - "EP" STYLE

Stock Code	Size in Inches	Fastener
EP-505	5	1/4

### Center Hole Only Round Pads - Bright Dipped POLISHED - "D" STYLE

Stock Code	Size in Inches	Description
D-253-TCH	2.5 x .250	#10 (3/8 - 16 threaded center hole) - <b>NEW!</b>
BRP-250	2.5 x .250	#10 (3/8 - 16 threaded center hole)
D-300-CH	3 x .250	1/4 Center Hole (1/4 fastener)
D-400-CH	4 x .250	1/4 Center Hole (1/4 fastener)
D-401 (NC)	4 x .250	1/4 Center Hole (1/4 fastener)
D-500-CH	5 x .250	1/4 Center Hole (1/4 fastener)
D-501 (NC)	5 x .250	1/4 Center Hole (1/4 fastener)



4" Center Hole Only Round Pad

MARINE PRODUCTS 08



# Round Marine Pads - (Packaged in pairs)

**D = Polished**  
**B = Brushed**

## HIGH POLISHED PADS

### 3-Hole Round Pads - High Polished "EP" Style

<u>Stock Code</u>	<u>Size in Inches</u>	<u>Fastener</u>
PEP-253	2.5	#10
PEP-303	3	1/4
PEP-353	3.5	1/4
PEP-403	4	1/4
PEP-403-375	4	1/4 (3/8" thick) - <b>NEW!</b>
PEP-403-250	4	1/4 (1-1/4" center hole)
PEP-453-375	4.5	1/4 (3/8" thick)
PEP-45337515	4.5	5/16 (3/8" thick; 1-1/2" center hole) - <b>NEW!</b>
PEP-503	5	1/4
PEP-503-375	5	1/4 (3/8" thick) - <b>NEW!</b>

EP Edge Style



D or B Standard Edge Style



### 4-Hole Round Pads - High Polished "EP" Style

PEP-404	4	1/4
PEP-454	4.5	1/4
PEP-454-375	4.5	1/4 (3/8" thick) - <b>NEW!</b>
PEP-45437515	4.5	5/16 (3/8" thick; 1-1/2" center hole) - <b>NEW!</b>
PEP-504-375	5	5/16 (3/8" thick) - <b>NEW!</b>
PEP-504-3752	5	5/16 (3/8" thick; 2" center hole) - <b>NEW!</b>



4" Center Hole Only Round Pad

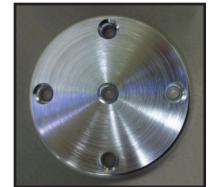
### 5-Hole Round Pads - High Polished "EP" Style

EP-505OS	5	5/16 (3/8" thick; offset) - <b>NEW!</b>
PEP-505OS225	5	5/16 (3/8" thick; offset) - <b>NEW!</b> w/ 2-1/4 center hole)

### Center Hole Only Round Pads - High Polished "D" Style

D-400-TCH-HP	4 x .375	3/8 Threaded Center Hole
--------------	----------	--------------------------

4" 4-Hole Round Pad Bright Dipped Brushed (B)



## BRUSHED PADS

### 3-Hole Round Pads - Bright Dipped BRUSHED Standard Edge

<u>Stock Code</u>	<u>Size in Inches</u>	<u>Fastener</u>
B-303A	3	1/4
B-353	3.5	1/4
B-400-TCH	4	3/8 (Threaded Center Hole)
B-403	4	1/4
B-453	4.5	1/4
B-503	5	1/4

### 3 Hole Round Pads - Bright Dipped BRUSHED "EP" STYLE - **NEW!**

<u>Stock Code</u>	<u>Size in Inches</u>	<u>Fastener</u>
EPB-353	3-1/2	1/4
EPB-403	4	1/4
EPB-453	4-1/2	1/4
EPB-503	5	1/4

### 4-Hole Round Pads - Bright Dipped BRUSHED Standard Edge

B-404	4	1/4
B-404OS	4	1/4 (offset)
B-454	4.5	1/4
B-504	5	1/4

### 4 Hole Round Pads - Bright Dipped BRUSHED "EP" STYLE - **NEW!**

<u>Stock Code</u>	<u>Size in Inches</u>	<u>Fastener</u>
EPB-354	3-1/2	1/4
EPB-404	4	1/4
EPB-404OS	4	1/4 (offset)
EPB-454	4-1/2	1/4
EPB-504	5	1/4

### Center Hole Only Round Pads

#### Bright Dipped BRUSHED - "D" STYLE

11386-12	3 x .375	3/8 Threaded Center Hole (Light Machined)
D-300-CH	3 x .375	3/8 NON Threaded Countersunk Center Hole (Light Machined) - <b>NEW!</b>
D-400-TCH	4 x .375	3/8 Threaded Center Hole (Light Machined)
B-400-TCH	4 x .375	3/8 Threaded Center Hole (Brushed)

Custom size pads built to your specifications  
(minimum quantity required)

MARINE PRODUCTS 09



www.easternmetal.com • info@easternmetal.com • www.TigressOutriggers.com 09/29/20  
FL: 800-432-2204 • NC/DE/GA: 800-343-8154 • TX/AR: 800-996-6061 • MO/OH: 888-822-6061

# Round Marine Pads - (Packaged in pairs)

## MILL FINISH PADS

### 3-Hole Round Pads - MILL FINISH - Standard Edge

<u>Stock Code</u>	<u>Size in Inches</u>	<u>Fastener</u>
52-63-6781-MF	2.5	#10 (5/16 Threaded Center Hole)
D-253-TCH-MF	2.5	#10 (3/8 - 16 threaded center hole) - <b>NEW!</b>
<i>(mates with D-403-375 for folding/pivoting backrest supports)</i>		
D-303-MF	3	#10
D-303-MF-NCS	3	#10 (no counter sink) - <b>NEW!</b>
SPECIAL ORDER	3 ( <i>D-303A-MF</i> )	1/4
D-353-MF	3.5	1/4
D-353-312-MF	3.5	5/16 (no counter sink) - <b>NEW!</b>
SPECIAL ORDER	3.5 ( <i>D-353-NCS-MF</i> )	1/4 (no counter sink)
D-403-MF	4	1/4
D-403-NCS-MF	4	1/4 (no counter sink)
D-403-312-MF	4	5/16 (no counter sink) - <b>NEW!</b>
D-453-MF	4.5	1/4
D-453-NCS-MF	4.5	1/4 (no counter sink)
D-453-312-MF	4.5	5/16 (no counter sink) - <b>NEW!</b>
MFEP-453-150CH	4.5	#10 (1-1/2 center hole; 5/16 no counter sink holes) - <b>NEW!</b>
D-503-MF	5	1/4
D-503-312-MF	5	5/16 - <b>NEW!</b>

D Standard Edge Style



### 4-Hole Round Pads - MILL FINISH - Standard Edge

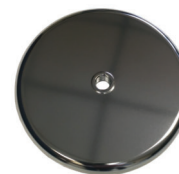
<u>Stock Code</u>	<u>Size in Inches</u>	<u>Fastener</u>
D-304-MF	3	#10
SPECIAL ORDER	3.5 ( <i>D-354-MF</i> )	1/4
D-404-MF	4	1/4
MFEP-404-150CH	4	5/16 (1-1/2" center hole; no counter sink) - <b>NEW!</b>
D-454-MF	4.5	1/4
MFEP-454-150CH	4.5	5/16 (1-1/2" center hole; no counter sink) - <b>NEW!</b>
D-504-MF	5	1/4

EP Edge Style



### 3 Hole Round Disc - MILL FINISH - "EP" STYLE

<u>Stock Code</u>	<u>Size in Inches</u>	<u>Fastener</u>
EP-303-MF	3	1/4
EP-353-MF	3.5	1/4
EP-403-MF	4	1/4



### 4 Hole Round Disc - MILL FINISH - "EP" STYLE

<u>Stock Code</u>	<u>Size in Inches</u>	<u>Fastener</u>
SPECIAL ORDER	<i>EP-404-MF</i>	1/4

4" Center Hole Only  
Round Pad High Polished

### Center Hole Only Round Disc - MILL FINISH - "D" STYLE

<u>Stock Code</u>	<u>Size in Inches</u>	<u>Description</u>
D-375-CH-MF	3 x .375	3/8 Threaded Center Hole
D-400-TCH-MF	4 x .375	3/8 Threaded Center Hole
D-500-TCH-MF	5 x .375	3/8 Threaded Center Hole

*Custom size pads built to your specs (minimum quantity required)*

MARINE PRODUCTS 10



# Rectangular Marine Pads - (Packaged in pairs)

## POLISHED PADS

### 2-Hole Rectangular (Oblong/Shape) Pads Bright Dipped POLISHED

Stock Code	Size in Inches	Fastener
RP-1535-2	1-1/2 x 3-1/2	1/4
RP-2040-2	2 x 4	1/4

### 4-Hole Rectangular (Oblong/Shape) Pads Bright Dipped POLISHED

Stock Code	Size in Inches	Fastener
SPECIAL ORDER	1-1/2 x 3-1/2	#10 ( <u>RP-1535-4</u> )
<u>RP-2040-4</u>	2 x 4	1/4
RP-2540-4	2-1/2 x 4	1/4
RP-3040-4	3 x 4	1/4
RP-3040-41250	3 x 4	1/4 (1-1/4 center hole)
RP-3045-4	3 x 4-1/2	1/4

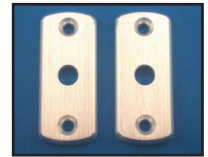
*More in next column top right →*

### 4-Hole Rectangular (Oblong/Shape) Pads Bright Dipped POLISHED - continued

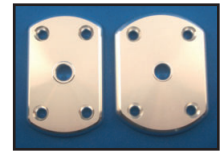
Stock Code	Size in Inches	Fastener
RP-3550-4	3-1/2 x 5	1/4
<u>RP-3550-4-375</u>	3-1/2 x 5 (3/8 thick)	1/4 - <b>NEW!</b>
<u>RP-4060-4</u>	4 x 6 x 3/8	1/4
<u>RP-4060-41OB</u>	4 x 6 x 1/4	1/4
<u>RP-4060-425</u>	4 x 6 x 1/4	1/4 (2-1/2" center hole) - <b>NEW!</b>
<u>RP-4060-425NCH</u>	4 x 6 x 1/4	1/4 (no center hole) - <b>NEW!</b>
<u>RP-4060-4OB</u>	4 x 6 x 3/8	5/16

### 4-Hole Rectangular (Radius Corner) Pads Bright Dipped POLISHED

Stock Code	Size in Inches	Fastener
SPECIAL ORDER	2 x 4	1/4 ( <u>RP-2040-4RC</u> )
RP-3040-4RC	3 x 4	1/4



2 Hole Rect. Pads  
Oblong/Shape



4 Hole Rect.  
Oblong/Shape Pads  
Polished

## HIGH POLISHED PADS

### Rectangular (Oblong/Shape) Pads - HIGH POLISHED - "EP" STYLE

Stock Code	Size in Inches	Fastener
<u>PEP-3040-4RC</u>	3 x 4 x .250	4 Holes (1/4"): Radius Corner; NOT Oblong
<u>PEP-3040-4OB</u>	3 x 4 x .250	4 Holes (1/4"): Oblong
<u>PEP-3040-4NCH</u>	3 x 4 x .375	4 Holes (1/4"): no center hole - <b>NEW!</b>
<u>PEP-3045-4OB</u>	3 x 4.375 x .250	4 Holes (1/4"): Oblong
<u>PEP-3045-4OB3</u>	3 x 4.375 x .250	4 Holes (1/4"): Oblong; 1-1/2" Center Hole
<u>RP-4060-425</u>	4 x 6 x .250	4 Holes (1/4"): Oblong; 2-1/2" Center Hole
<u>PEP-4060-4OB</u>	4 x 6 x .375	4 Holes (1/4"): no center hole - <b>NEW!</b>
<u>RC-4060-4OB</u>	4 x 6 x .375	4 Holes (5/16"): Countersunk; 2" Center Hole (6463-T66)
<u>RP-4060-4375</u>	4 x 6 x .375	4 Holes (1/4"): Oblong; 2-1/2" Center Hole
<u>RC-4565-4OB</u>	4.5 x 6.5 x .250	4 Holes (5/16"): NO Countersink; (2-3/8" Center Hole (6463-T66)
<u>RC-4565-4OBN</u>	4.5 x 6.5 x .250	4 Holes (5/16"): NO Countersink (6463-T66)
<u>RC-4565-4OB3</u>	4.5 x 6.5 x .375	4 Holes (1/4"): NO Countersink; 3" Center Hole (6463-T66)
<u>RC-4565-4OB2</u>	4.5 x 6.5 x .375	4 Holes (1/4"): Countersunk; 2-3/8" Center Hole (6463-T66)
<u>RP-5070-4OB</u>	5 x 7 x .375	4 Holes (1/4"): Oblong
<u>RP-5070-6OB</u>	5 x 7 x .375	4 Holes (1/4"): Oblong with 6 Outside Holes



4 Hole Rect.  
Oblong/Shape Pads  
Polished (1-1/4 center hole)



4 Hole Rect.  
Radius Corner Pads

## BRUSHED PADS

### 2-Hole Rectangular (Radius Corner) Pads - Bright Dipped BRUSHED

RB-2040-2	2 x 4	1/4
-----------	-------	-----

### 4-Hole Rectangular (Oblong/Shape) Pads - Bright Dipped BRUSHED

<u>RB-2540-4</u>	2-1/2 x 4	1/4
RB-3040-4OB	3 x 4	1/4
<u>RB-3045-4-MF</u>	3 x 4-1/2	1/4 (Brushed/No Anodize)
RB-3045-4	3 x 4-1/2	1/4
<u>RB-3550-4</u>	3-1/2 x 5	1/4
<u>RB-4060-4</u>	4 x 6 x 3/8	1/4
RB-4060-41OB	4 x 6 x 1/4	1/4

### 4-Hole Rectangular (Radius Corner) Pads - Bright Dipped BRUSHED

RB-2040-4	2 x 4	1/4
RB-2540-4R	2-1/2 x 4	1/4
RB-3040-4	3 x 4	1/4

*Custom size pads built to your specs (minimum quantity required)*



4 Hole Rect.  
Radius Corner Pads Brushed

# Rectangular Marine Pads - (Packaged in pairs)

**D = Polished**  
**B = Brushed**

## MILL FINISH PADS

### 4-Hole Rectangular (Oblong/Shape) Pads - MILL FINISH

Stock Code	Size in Inches	Fastener
MFRP-4583-4	4 x 5.83	5/16 (no counter sink) - <b>NEW!</b>
MFRP-4060-4150	4 x 6	5/16 (1-1/2" center hole; no counter sink) - <b>NEW!</b>
MFRP-4060-2CH	4 x 6	5/16 (2" center hole; no counter sink) - <b>NEW!</b>

### 4-Hole Rectangular (Radius Corner) Pads - MILL FINISH

RP-3040-4RC-MF	3 x 4	1/4
----------------	-------	-----

## Miscellaneous Marine Pads - (Packaged in pairs)

### 2-Hole Oval Pads

OP-2035-2	2 x 3.5 (brushed)	1/4
OP-2035-2P	2 x 3.5 (polished)	1/4
OP-2035-2P-MF	2 x 3.5 (mill finish)	1/4
MFOP-2035-2	2 x 3.5 (mill finish)	5/16 - <b>NEW!</b>
OP-2540-2B	2.5 x 4 (brushed)	1/4
OP-2540-2P	2.5 x 4 (polished)	1/4
OP-2540-2P-MF	2.5 x 4 (mill finish)	1/4



Oval Pads



Tear Drop Pads

### Tear Drop Pads - Bright Dipped - Polished

Stock Code	Size in Inches	Fastener
TD-3040	2 x 3 (with countersunk hole)	1/4
TD-3040-MF	2 x 3 (with countersunk hole) - Mill Finish	1/4



Triangular Heart Pads



Heart Pad

### Triangular Heart Pads

Stock Code	Size in Inches	Fastener
TP-353	3-1/2	1/4
HP-3040-3	3 x 4 (Polished)	1/4

### Diamond Pads

DP-2035-3	2 x 3-1/2 (Polished)	1/4
DB-2035-3	2 x 3-1/2 (Brushed)	1/4
DB-2045-3	2 x 4-1/4 (Brushed)	1/4



Diamond Pads



Square Pad

### Square Pad

SPECIAL ORDER <u>SB-222</u>	2 x 1/4	3/16
-----------------------------	---------	------

### Outrigger Hard Top Pad

LHOP-875	Outrigger Hard Top Pad
LHOP-875MF	Outrigger Hard Top Pad (Mill Finish)
LHOP-875MF313	Outrigger Hard Top Pad (Mill Finish - 5/16 non counter sunk) - <b>NEW!</b>



Outrigger Hard Top Pad



Windshield Pad

### Pad for Windshield Guard

EPWP-150	1-1/2 x 1/4 Round Pad (BDA; Lite Machining)
----------	---

### Antenna Ratchet Mounting Pads

AP-320	3 x 2 x 1/4
AP-4	4 x 4x 1/4



Antenna Ratchet Mounting Pads

*Custom size pads built to your specs (minimum quantity required)*

MARINE PRODUCTS 12



www.easternmetal.com • info@easternmetal.com • www.TigressOutriggers.com 06/18/20  
FL: 800-432-2204 • NC/DE/GA: 800-343-8154 • TX/AR: 800-996-6061 • MO/OH: 888-822-6061

# Special Marine Pads

## Round Pads - Bright Dipped POLISHED - Standard Edge

<u>Stock Code</u>	<u>Size (Inches)</u>	<u>Description</u>	<u>Fastener</u>
<u>D-300-CH</u>	3 x .250	Contains center hole only; countersunk	1/4
<u>11386-12</u>	3 x .375	Contains center hole only (threaded 3/8-16); countersunk	1/4
<u>D-400-CH</u>	4 x .250	Contains center hole only; countersunk	1/4
<u>D-500-CH</u>	5 x .250	Contains center hole only; countersunk	1/4

## Round Pads - Bright Dipped BRUSHED - Standard Edge

<u>Stock Code</u>	<u>Size (Inches)</u>	<u>Description</u>
<u>EB-250-CH</u>	2.5 x .250	Contains NON-Threaded Center Hole Only (3/16"): NO Countersink (6463-T66)
<u>EB-300-CH</u>	3 x .250	Contains NON-Threaded Center Hole Only (3/16"): NO Countersink (6463-T66)
<u>B-400-TCH</u>	4 x .375	Contains NON-Threaded Center Hole Only (5/16"): NO Countersink (6463-T66)
<u>57678-14A</u>	4.5 x .375	3 Holes (5/16"): Countersunk (6061-T6)
<u>57678-13A</u>	6 x .250	3 Holes (5/16"): NO Countersink; NO Center Hole (6061-T6)
<u>57678-11A</u>	6 x .375	3 Holes (5/16"): Countersunk; 2" Center hole (6061-T6)



57678-11A

## Round Pads - MILL FINISH - Standard Edge

<u>Stock Code</u>	<u>Size (Inches)</u>	<u>Description</u>
<u>57678-15M</u>	4.5 x .250	3 Holes (5/16"): NO Countersink (6463-T66)
<u>57678-12M</u>	6 x .250	3 Holes (5/16"): NO Countersink; 2" Center Hole (6061-T6) - Backing Plate



57678-7A

## Rectangular (Oblong/Shape) Pads - Bright Dipped BRUSHED

<u>Stock Code</u>	<u>Size (Inches)</u>	<u>Description</u>
<u>57678-4A</u>	4 x 6 x .375	4 Holes (5/16"): NO Countersink (6463-T66)
<u>57678-5A</u>	4 x 6 x .375	4 Holes (5/16"): Countersunk (6463-T66)
SPECIAL ORDER	4 x 6 x .375	4 Holes (5/16"): NO Countersink; 2" Center Hole 6463-T66 - ( <u>57678-6A</u> )
SPECIAL ORDER	4 x 6 x .375	4 Holes (5/16"): Countersunk; 2" Center Hole 6463-T66 - ( <u>57678-7A</u> )
<u>57678-2AA</u>	4 x 12 x .375	6 Holes (5/16"): NO Countersink (6463-T66)
<u>57678-8A</u>	4.5 x 6 x .375	4 Holes (5/16"): Countersunk (6061-T6)



57678-2AA



57678-8A

57678-4M

## Rectangular (Oblong/Shape) Pads - 6463-T66 - MILL FINISH

<u>Stock Code</u>	<u>Size (Inches)</u>	<u>Description</u>
<u>57678-9M</u>	4 x 6 x .250	4 Holes (5/16") and 2" Center Hole: NO Countersink
SPECIAL ORDER	4 x 6 x .375	4 Holes (5/16"): NO Countersink - ( <u>57678-4M</u> )
SPECIAL ORDER	4 x 12 x .375	6 Holes (5/16"): NO Countersink; 2 - 2" Center Holes - ( <u>57678-1M</u> )
SPECIAL ORDER	4.5 x 6 x .250	4 Holes (5/16"): NO Countersink; 2 - 2" Center Holes - ( <u>57678-10</u> )



57678-1M

## Poling Platform Mounting Pad - Bright Dipped - POLISHED

<u>Stock Code</u>	<u>Size (Inches)</u>	<u>Description</u>
<u>PPMP</u>	3 x 10 x .25	5 Holes

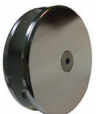
Poling Platform Mounting Pad



## 4" Round Hard Top Mounting Pad - Bright Dipped - POLISHED

<u>Stock Code</u>	<u>Size (Inches)</u>	<u>Description</u>
<u>4RHTMP</u>	4 x .375	(3/8" thread) Sold in set of 2 pads; Hardware NOT included.

4" Round Hard Top Mounting Pad (2 pads)



## Hard Top Mounting Pad - Bright Dipped - POLISHED

<u>Stock Code</u>	<u>Size (Inches)</u>	<u>Description</u>
<u>HTMP</u>	4 x 12.875 x .375	8 Holes

Hard Top Mounting Pad



## Leaning Post Pad - Bright Dipped - POLISHED

<u>Stock Code</u>	<u>Size (Inches)</u>	<u>Description</u>
<u>LPP-21625</u>	2 x 16	6 Holes

Leaning Post Pad



*Custom size pads built to your specifications (minimum quantity required)*