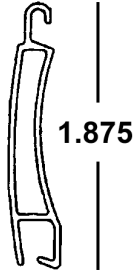


# 40MM NON END RETENTION ROLL SHUTTER SYSTEM - Code Approvals

40mm: FBC (non-HVHZ), FBC (HVHZ), IBC/IRC

**40 MM SLAT x 20' (vented)**  
40-WH-275T

40-IV-275T - **CLOSEOUT**  
40-MB-275T - **CLOSEOUT**  
40-BG-275T - **CLOSEOUT**  
10 Pcs



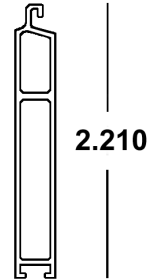
**40mm Non-ER SLAT LOCK**

40-63-796 Left & Right  
(2 Bags of 100 each)  
Black



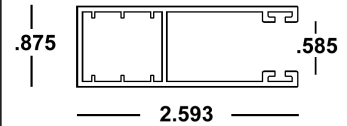
**BOTTOM SLAT x 22'**

41-WH-001 White  
41-MB-001 (TX) White  
10 Pcs



**40 MM TRACK x 20'**  
40-WH-002

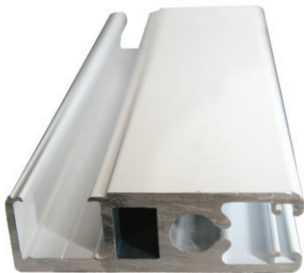
40-IV-002 - **CLOSEOUT**  
40-MB-002 - **CLOSEOUT**  
40-BG-002 - **CLOSEOUT**  
6 Pcs



## MISCELLANEOUS ROLL SHUTTER EXTRUSIONS

**BERTHA™ GLADIATOR SCREEN**

3-1/4" Side Rail x 24' 5"  
41-WH-705 White  
41-IV-705 Ivory  
41-MB-705 Bronze  
41-BG-705 Beige



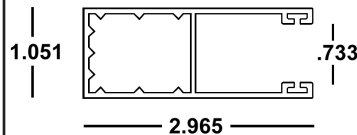
**BERTHA™ GLADIATOR SCREEN**

Rail Cap x 24'  
41-WH-703 White  
41-IV-703 Ivory  
41-MB-703 Bronze  
41-BG-703 Beige



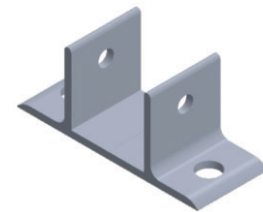
**DADE 55 MM TRACK x 24'6"**  
41-COLOR-300

Available in White (WH), Ivory (IV),  
Bronze (MB) and Beige (BG)  
6 Pcs  
Felt: 41-HV-160



**2" STORM BAR CLIP**

6063-T6 Mill Finish  
x 2" **TB-CLIP** (with holes)  
x 12' **40-63-262**  
Receives 2" Square Tube;  
Also used as support brace  
bracket



2" Piece with Holes

Copyright 2007-2020 Eastern Metal Supply, Inc. HV™, BERTHA HV®, BERTHA® are all trademarks of Eastern Metal Supply, Inc. ASSA® is a trademark of the American Shutter Systems Association. All rights reserved.

HURRICANE 24



Eastern Metal Supply [www.easternmetal.com](http://www.easternmetal.com) • [info@easternmetal.com](mailto:info@easternmetal.com) 08/18/20

FL: 800-432-2204 • NC/DE/GA: 800-343-8154 • TX/AR: 800-996-6061 • MO/OH: 888-822-6061